

Master Sound Control Version 2.0.0.3

Set the tone, when you want it played!

User Manual

Master Sound Control offers the unique ability to remotely control absolute reliable sound during a presentation or show. Easy Remote Control sound options such as navigation through playlists, volume adjustment, fading, blending, stopping, starting, forwarding, re-winding are easily accessible items which can be set to the allocated button. This absolute reliable and robust system has been developed especially for professional use, so that an additional sound-technician or assistant is no longer needed.

Available upon request is also the virtually invisible remote foot-switch.

Table of Contents	Page
1. Software Setup	2
2. Receiver Connection	2
3. Software Start-Up	3
4. Description of Various Operations	4
5. Radio Communication Check	10
6. Remote Control Instructions	11
7. Foot Switch Usage	13
8. Connection to the Music-System	13

1. Software Setup

Preinstall requirements: Netbook, Laptop or Tablet PC with USB Port and Operating Systems: Windows XP SP3 or newer, Windows 7, or Windows 8.

Following software is required for the software setup:

.NET Framework 4 from Microsoft
..\dotNetFx40_Fullx86_x64.exe
(depending on the type of computer, installation time can vary)
(not necessary for Windows 8)

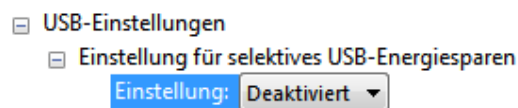
Driver for the Receiver
..\CDM20828_Setup.exe
not required if MasterSoundControl Software runs as demo-version (without receiver)

MasterSoundControl Software
..\Release\setup.exe

All software is to be found on the Master Sound Control CD enclosed.

Furthermore deactivate

- All power-saving settings of the computer.
- Any USB power-saving settings.



- Screen savers.

to avoid unexpected functioning during the operation

2. Receiver Connection

Screw the aerial on to the aerial socket of the receiver.

Connect the receiver to the computer by using the USB cable. The receiver will be powered by the computer. When the green LED lights up on the receiver then it is connected correctly.



3. Software Start-Up

The software can either be started using the desktop icon “Master Sound Control”, or using “Start – All programs – Master Sound Control”

Upon first-time start-up the following message will appear:

“No receiver detected. Software runs in demo mode.”

In the demo-mode almost all functions can be tested without the receiver or Remote Control.

To exit the demo the correct connection to the receiver must be selected (COM Port). This can be done when the receiver is attached under Extras – Options – Settings – COM Port within the Master Sound Control Software.

Should further settings show up on this selection box, then find the correct COM Port in Windows (all Versions) in Device Manager (e.g. Windows 7: Start – System Control – Hardware and Sound – Devices and Printer – Device Manager – Ports (COM & LPT).

This following message should appear when the receiver is attached to the computer:



The COM-number (here 24) is computer specific and can vary from computer to computer.

The software can be closed by either “File- Exit” or by closing the window (x).

4. Function Descriptions

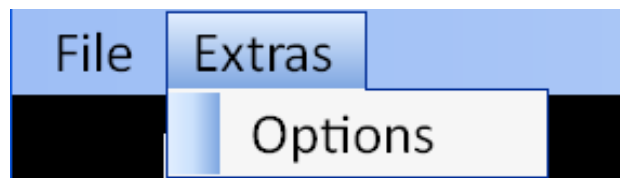
The Master Sound Control Software is intended for the following usage:

- Administration of playlists.
- Configuration of Remote Control, as well as general settings.
- Instruction conversion obtained from the receiver.
- Status bar display during performance.

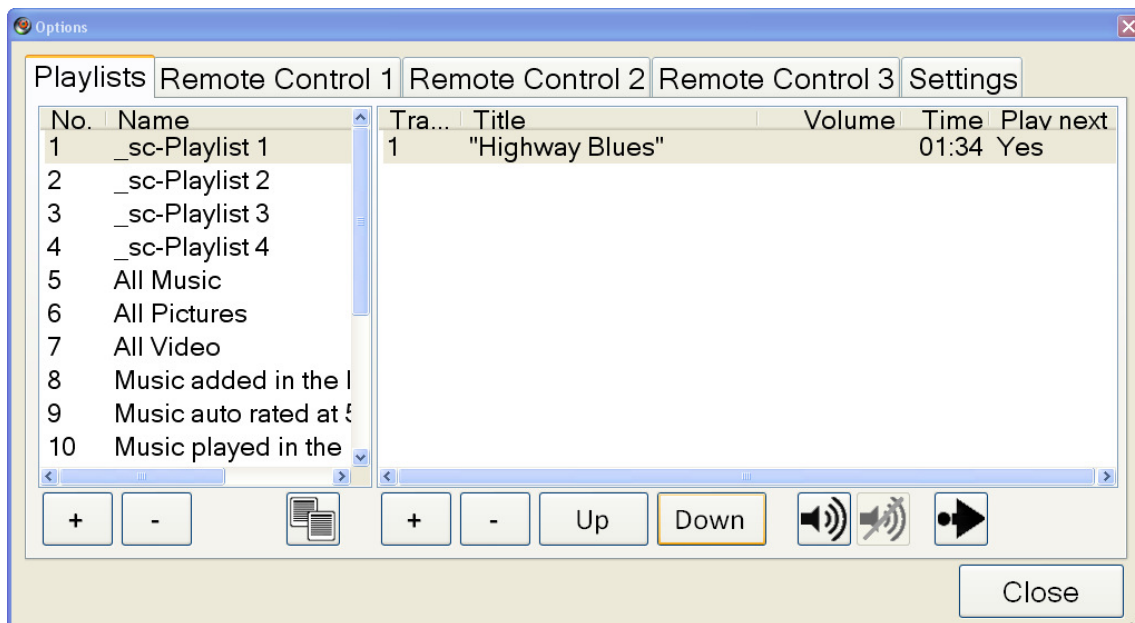
After starting the software the following screen appears, showing this information:



The configuration can be pulled up through "Extras-Options"



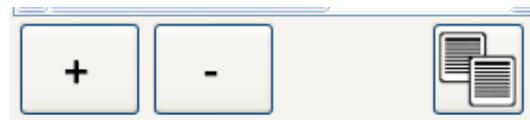
Playlist tab: Playlist, Starting Volume level and Play next definition



The playlists can be administrated, pre-setting the volume as well as setting the “Auto-Play-Next” behavior for each song. If a special volume is set for any song, that volume will stay with that particular song until otherwise changed by the Remote Control.

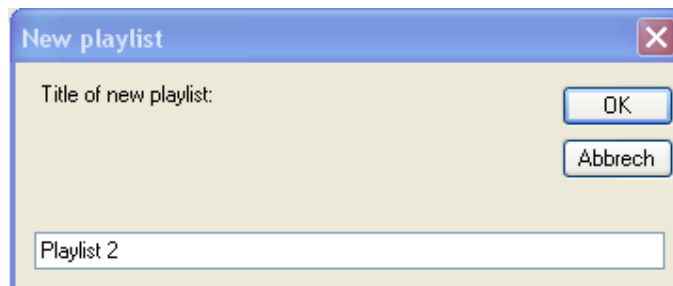
Before compiling a playlist, the songs have to be transferred by a USB stick to the computer (e.g. Folder..\My files\My music).

The application, deletion or copying of a playlist occurs by pressing the buttons below the playlists-display (left side of window).

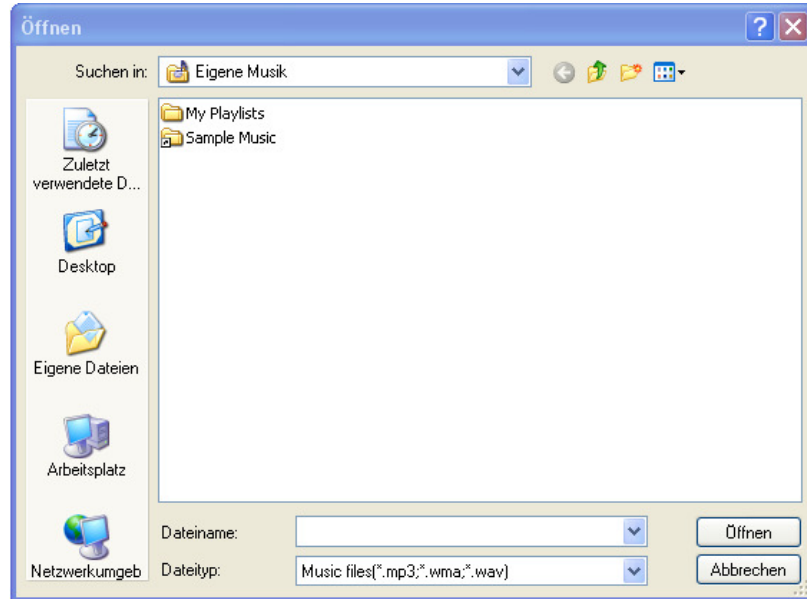


By clicking the “+” the following window will appear:

This is where you can title the playlist.



In the following “Open file – dialogue” the songs for the newly applied playlist can be chosen.



In this list the Track No., Title of the song and the starting volume, length of the song as well as Auto-Play-Next will show up.

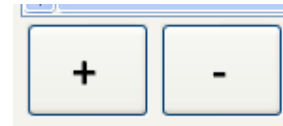
Tra...	Title	Volume	Time	Play next
1	"Highway Blues"		01:34	Yes
2	Symphony No. 9 (Sch...	30	01:16	

Below the table are control buttons: '+', '-', 'Up', 'Down', a speaker icon, a volume icon, and a play button.

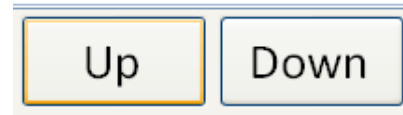
A complete playlist can be copied by pressing the copy button:



Afterwards songs can be added to or deleted from the playlist by pressing the buttons “+/-” below the title-window.



The sequence of each individual song in a playlist can be changed by pressing the “Up/Down” buttons.



Setting and deleting the start volume can be achieved by pressing the loudspeaker buttons:

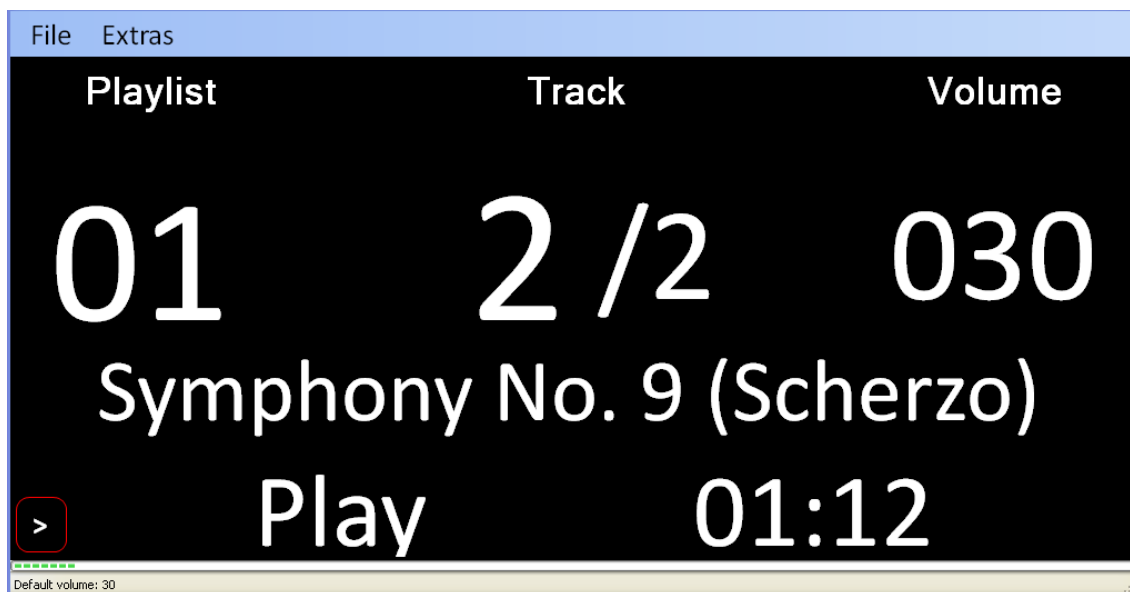


Each title can be overridden in the “Auto-Play-Next” pre-setting (see also tab settings). This way it is possible to set the “Auto-Play-Next” flag for each individual song whether the next song should be automatically played or not.



By repeated pressing the button the “Auto-Play-Next” settings change between Yes, No and Vacant whereby Vacant complies to the presetting.

Start-volume can also be set and controlled by using “>”, which is to be found at the bottom left of the start screen.

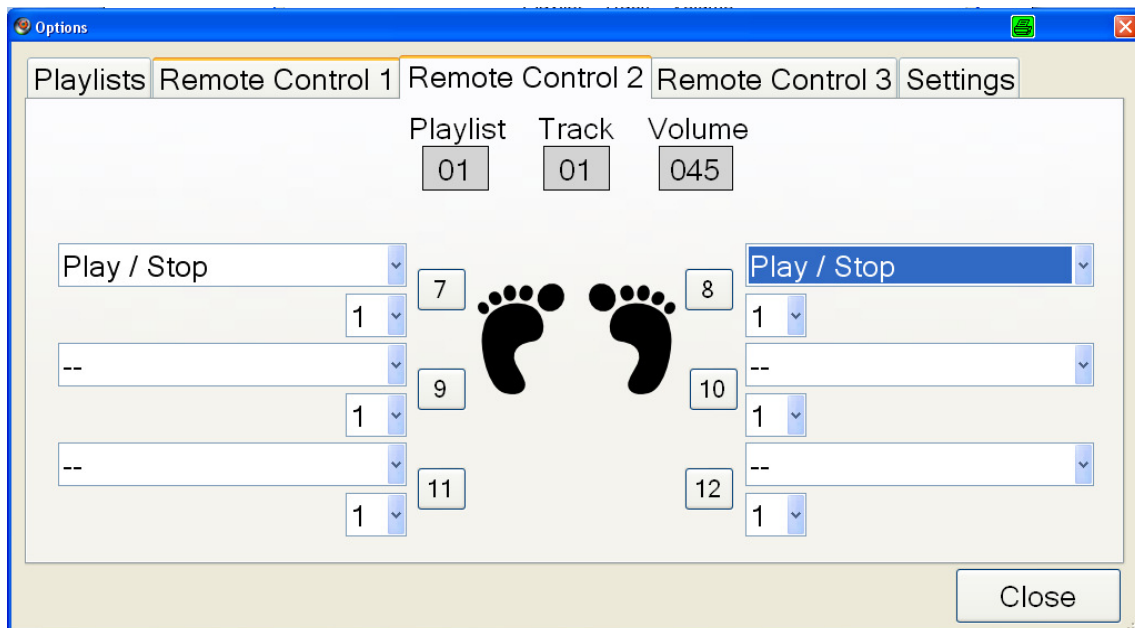
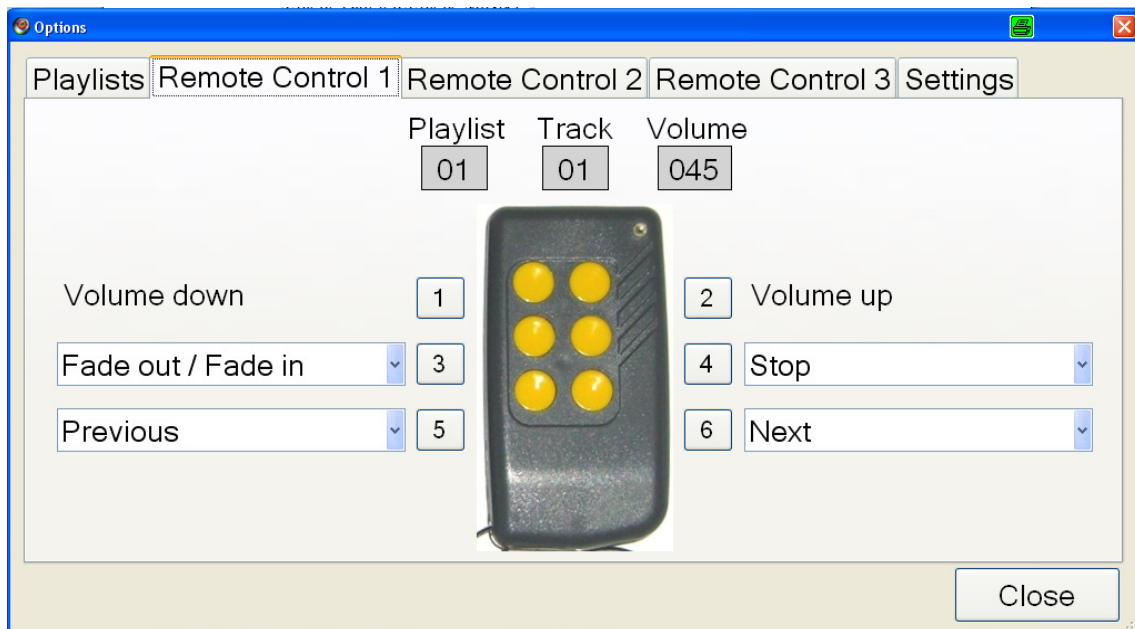


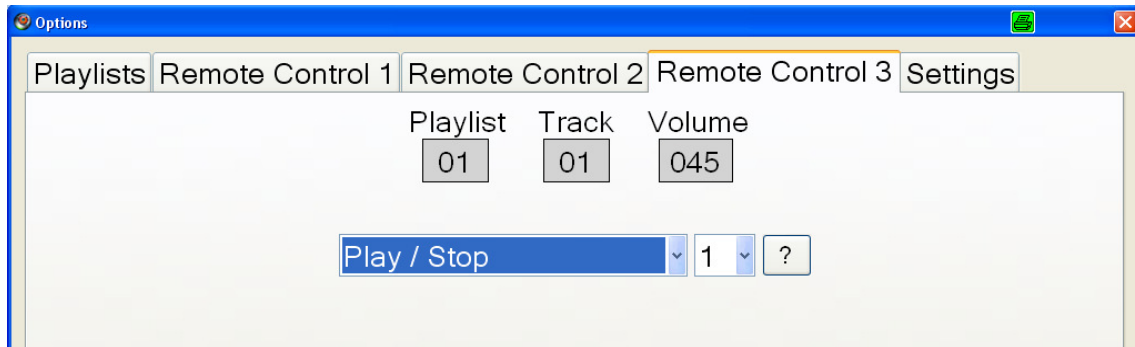
Suggestion:

Since the start-volume may not be saved on a sustained basis, songs should be saved in the folder My files\My music.

Remote Control Tab 1-3 button assignment

Dependent upon configuration type (1, 2, 3) of the Remote Control, the button-settings must be defined on the tab settings Remote Control 1-3 (see also Point 6).





The requested functions for each button can be set selected and permanently assigned.

Following functions are available:

Play
<i>Play/Stop</i>
Play/Pause
Play/Fade out
Play/Fade to next
Play/Fade to next, play
Stop
Previous
Next
Fade to Previous
Fade to next
Fade to next, play
Cross Fade
Lock/Unlock
Peak
Peak in/Peak out
Fade out/Fade in

Special Feature for Remote Control 1

Button 1 and Button 2 are designed for volume control and cannot be changed or altered.

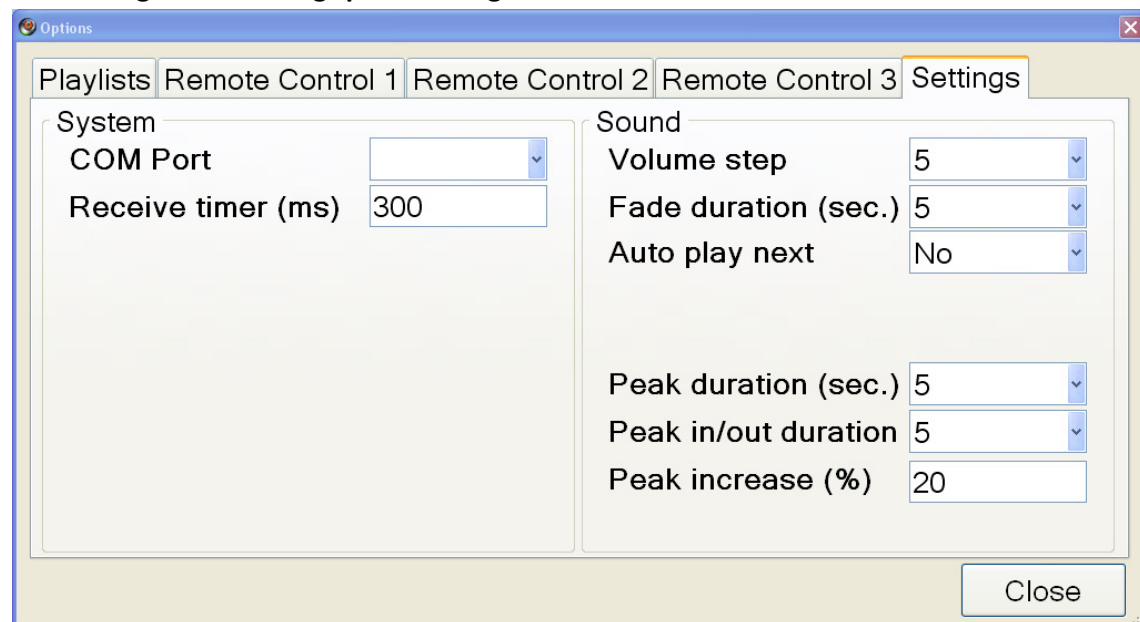
Special Feature for Remote Control 2

By default Button 7 or Button 8 is activated if the Foot-Switch is connected to the Remote Control. Buttons 9–12 will not be used in this case (see Point 6).

Special Features for Remote Control 3

Here we only have one selection box, all six buttons are used for direct song navigation (Song 1-6 of the designated playlist) and therefore have the same functionality.

Tab settings: Establishing special configurations



Category System

- COM Port (see Point 3)
- Receive timer (ms) (see Point 6)

Category Sound

This is where Fade In/Fade Out settings such as (Volume step, Fade duration), as well as (time-limited) Volume Peak in/Peak out are to be found.

“Auto-Play-Next” automatically controls playing the entire playlist.

5. Radio Communication Test

Radio transmission triggered by pressing any one of the Remote Control buttons will be illuminated by the red LED on the receiver. By pressing the Remote Control button longer, only one pulse or constant pulses (every 300 milliseconds) will be sent, depending on the Remote Control configuration (see Point 4).

Special Features of Configuration 2 and 3

Master Sound Control has a built-in mechanism to prohibit accidentally pressing a button.

With just a few settings it is possible to only give the command by pressing the button on the remote control longer (eg. 1 second) or more than once within a pre-defined time (eg. By pressing the button twice within one second). These settings are optional whereas unchanged settings complies to Configuration 1 (immediate execution without delay).

The protect mechanism is a combination of the Remote Control and Master Sound Control Software. (Settings "Receive timer (ms)" on the tab settings, as well as the pulse selection box 1-9 of the tab settings Remote Control 2 and 3).

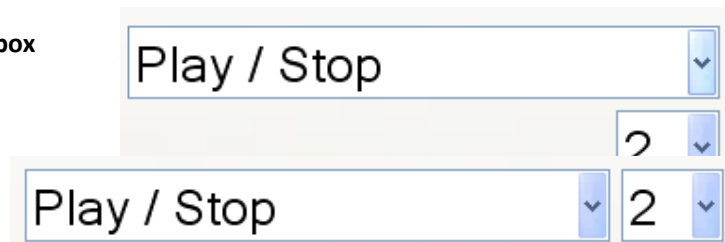
Function and number of pulses list box

Tab Remote Control 2:

Tab Remote Control 3:

The number list box (1-9) defines

the number of pulses the receiver must recognize within the „Receive timer (ms) to execute the command.



Examples for different settings of the Foot-Switch

- a) Play/Stop function will only work, if the button has been pressed for a minimum of 300 milliseconds. If the button has been pressed accidentally the function will not work.

Remote Control

Button 8 will be set by the slide switch (continuous pulse)

Tab Setting Remote Control 2

Set "Play/Stop" function on Button 8.

Set the Selection box for Button 8 to "2".

Tab Settings

Set "Receive timer (ms)" to 500. [ms = milliseconds]

- b) Play/Stop function should only work when the button has been pressed twice within 800ms. By accidentally pressing the button the function will not work.

Remote Control

Button 7 will be set by the slide switch (single pulse)

Tab Setting Remote Control 2

Set "Play/Stop" function on Button 7.

Set the Selection box for Button 7 to "2".

Tab Settings

Set "Receive timer (ms)" to 800.

7. Foot-Switch

In practical experience it has been positively proven successful to secure the Foot-Switch to the big toe, button showing up using Kinesio-Tape and then sticking the Remote Control inside the sock. Kinesio-tape is extraordinarily elasticized and by wrapping the tape around the Foot-Switch, will by no means interfere with activating the Buttons accidentally. An alternative possibility is to secure the Remote Control, (also by using Kinesio Tape to the leg). Kinesio-Tape is available in various colours at your local chemist.

8. Connection to the Music System

Normally the audio-exit of the computer can be connected by using a connection-lead (3-pole plug connector) to the music system. To protect the computer-internal audio connector it is advisable to use a USB Audio Adapter (also available upon request) between the computer and the music system. Therefore, in the unlikely event of wrong-voltage or excess voltage, the computer audio output will not be damaged.